

IA-300 Ion Analyzer

Simple simultaneous
multiple ion analysis
for everyone



Ion analysis made easy and accessible!

■ High-sensitivity, high-reliability

Reproducible data obtained by ion chromatography method

■ Easy to operate - anyone can use it!

Simple operation

Just simply inject samples to obtain measurements. Results are displayed by graphic screen and printed out simultaneously

Special knowledge, techniques not required

Chromatograph functions have been integrated into a single unit. Data analysis/calculation are also performed automatically by the analyzer.

All reagents required for analyses are available (sold separately)

No special equipment required

Maintenance mode

Maintenance/troubleshooting by on-screen navigation.

■ Multiple ion analysis

Select either a 7 Anions (F, Cl, NO₂, Br, NO₃, PO₄, SO₄) or 6 Cations (Li, Na, NH₄, K, Mg, Ca) analysis mode.

■ Multi-sample continuous analysis

By connecting to the ICA-200AS Auto Sampler (sold separately), automated multi-sample analysis is possible.

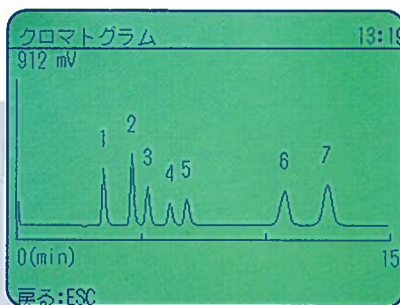
Measurement example

The analysis results can be displayed and printed out as quantitative values and chromatograms.

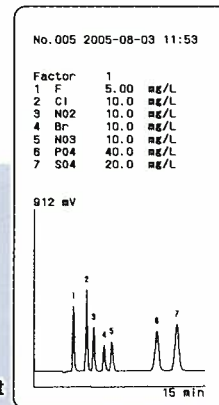
Anions

測定データ			
No.	005	2005/08/03	11:53
希釈率	:1		
ピーク	成分名	測定値	換算値
1	F	5.00 mg/L	5.00 mg/L
2	Cl	10.0 mg/L	10.0 mg/L
3	NO ₂	10.0 mg/L	10.0 mg/L
4	Br	10.0 mg/L	10.0 mg/L
5	NO ₃	10.0 mg/L	10.0 mg/L
6	PO ₄	40.0 mg/L	40.0 mg/L
7	SO ₄	20.0 mg/L	20.0 mg/L

Analysis data display



Chromatogram

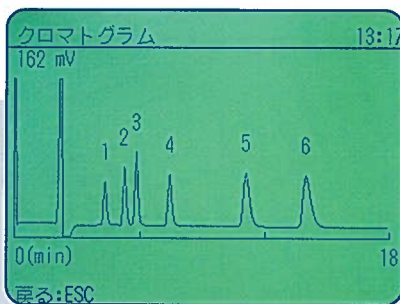


Printout

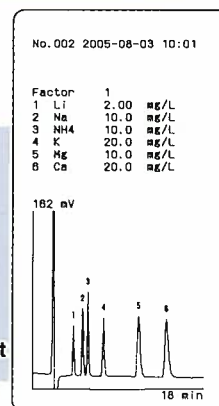
Cations

測定データ			
No.	006	2005/08/03	12:01
希釈率	:1		
ピーク	成分名	測定値	換算値
1	Li	2.00 mg/L	2.00 mg/L
2	Na	10.0 mg/L	10.0 mg/L
3	NH ₄	10.0 mg/L	10.0 mg/L
4	K	20.0 mg/L	20.0 mg/L
5	Mg	10.0 mg/L	10.0 mg/L
6	Ca	20.0 mg/L	20.0 mg/L

Analysis data display



Chromatogram



Printout

Specifications

Model	IA-300				
Measurement method	Ion chromatography				
Display	Graphic LCD display panel with back-light				
Measurement items	Negative ions: F, Cl, NO ₂ , Br, NO ₃ , PO ₄ , SO ₄ Positive ions: Li, Na, NH ₄ , K, Mg, Ca				
Sample measurements	Loop-cut system 20 μL or 200 μL				
Calibration method	1-point calibration by specific calibration solution				
Measurement modes	Suppresser Anions analysis (using PCI-205 column)		1/2 value Cations analysis (using PCI-322 column)		
Measurement range	Meas. Item	20 μL loop	Meas. item	20 μL loop	200 μL loop
	F		Li	0.05-10.0 mg/L	0.005-1.0 mg/L
	Cl		Na		
	NO ₂	0.050-50.0 mg/L	NH ₄	0.25-50.0 mg/L	0.025-5.0 mg/L
	Br		K	0.5-100.0 mg/L	0.05-10.0 mg/L
	NO ₃		Mg	0.25-50.0 mg/L	0.025-5.0 mg/L
	PO ₄	0.250-100.0 mg/L	Ca	0.5-100.0 mg/L	0.05-10.0 mg/L
	SO ₄	0.100-100.0 mg/L			
Measurement time	15 min.		18 min.		
Constant-temperature part	Constant-temperature of column/detection cell unit: 40 ± 4°C				
Detector	Conductivity sensor				
Data processing unit	Built-in (automated calculation)				
Printer	Built-in thermal printer				
Output	Analog: 0 - 1 V				
	Digital: RS-232				
Operating temp. range	10 - 35°C				
Electric power supply	AC 100 V 50/60 Hz				
Main unit dimensions	approx. (W) 190 x (H) 470 x (D) 530 mm				

Note 1: The written analysis modes are examples. Please make inquiries regarding other analysis modes.

Note 2: Conforms to all analysis modes used by earlier ion analyzers.

DKK-TOA CORPORATION



CAUTION

Do not operate products before consulting instruction manual.

International Operations:

DKK-TOA Corporation
29-10, 1-Chome, Takadanobaba, Shinjuku-ku, Tokyo 169-8648 Japan
Tel : +81-3-3202-0225 Fax : +81-3-3202-5685

Representative Office (Europe):

DKK-TOA European Representative
St. Johns Innovation Centre, Cowley Rd., Cambridge CB4 0WS UK.
Tel : +44 (0)1223-526471 Fax : +44 (0)1223-709239

<http://www.toadkk.co.jp>

Information and specifications are for a typical system and are subject to change without notice.